

# CHATSWOOD INTERCHANGE



Anchored by Woolworths, BWS, NAB, Australia Post, KFC, McDonald's, Amah, and LiLong by Taste of Shanghai, Chatswood Interchange serves as the gateway to the bustling retail and commercial hub of Sydney's North Shore.

The District Dining has established itself as the premier dining destination in Chatswood, offering 15 top-quality restaurants that serve authentic regional Asian cuisines.

## KEY CENTRE FACTS

**MAIN TRADE AREA POPULATION** 2024 URBIS REPORT



**223,000+**

**GLA**



**10,185<sub>M</sub><sup>2</sup>**

**RETAILERS**



**75**

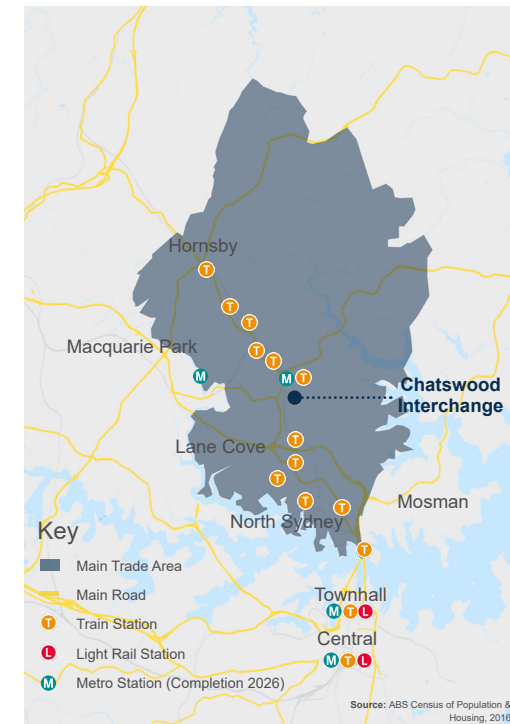
**COMMUTER TRAFFIC**



**27.7m+**

TRIPS BY TRAIN IN AUGUST 2024. [TRANSPORT.NSW.GOV](https://www.transport.nsw.gov.au)

## LOCATION MAP



**ENQUIRE NOW – JACKIE LI**

+61 481 812 888

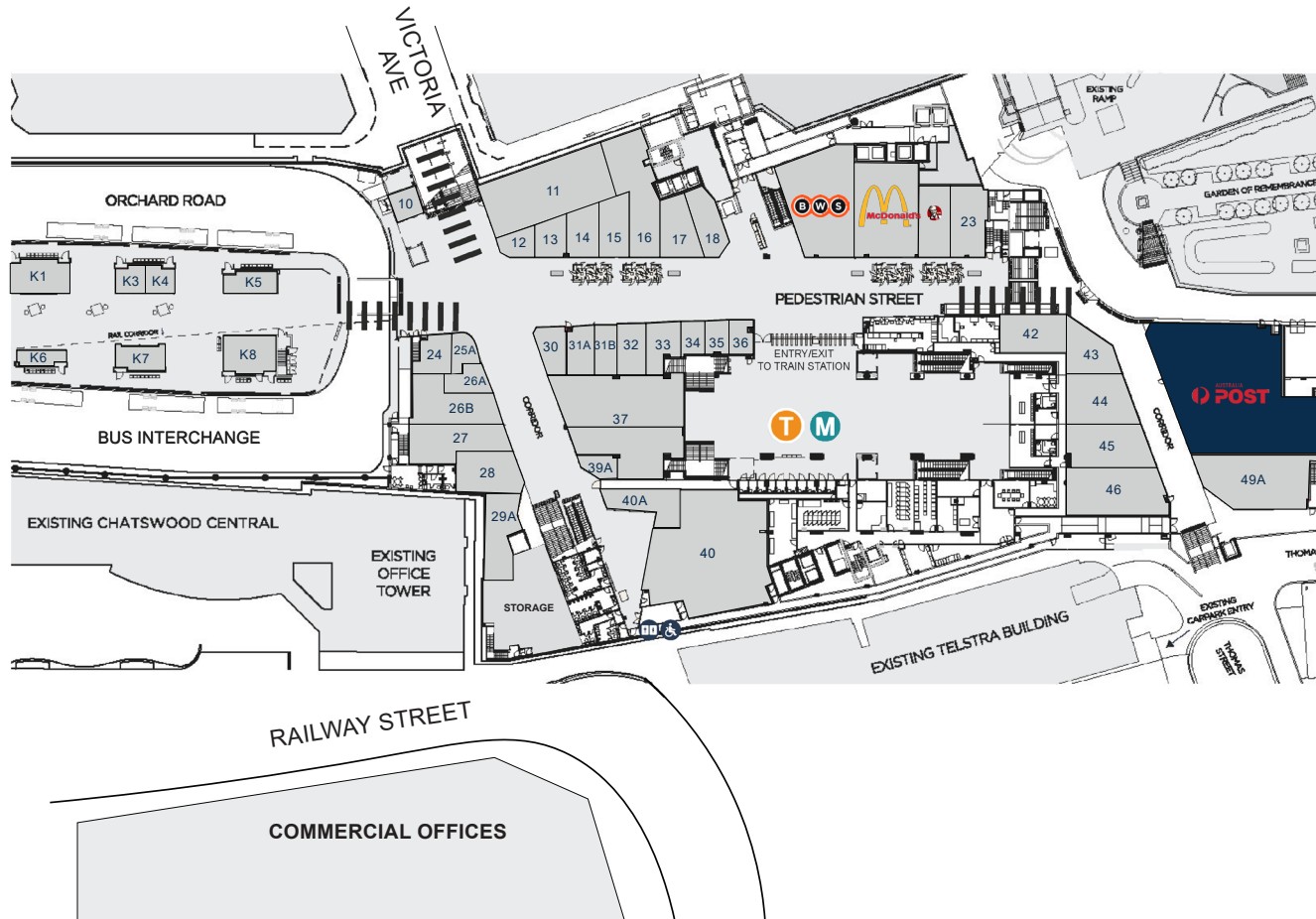
[jackiel@rookpartners.com](mailto:jackiel@rookpartners.com)



**ROOK**  
PARTNERS

# CENTRE PLAN

## STATION LEVEL



## Tenancies

10	CoCo Fresh Tea & Juice	20m <sup>2</sup>	34	Chatime	21m <sup>2</sup>
11	Taco Bell	182m <sup>2</sup>	35	Tech Resque	21m <sup>2</sup>
12	Cofi House	25m <sup>2</sup>	36	Sharetea	21m <sup>2</sup>
13	Toastiesmith	33m <sup>2</sup>	37-38	Joy Mart	293m <sup>2</sup>
14	Sushi World	45m <sup>2</sup>	39A	CEMO	19m <sup>2</sup>
15	Mixue	48m <sup>2</sup>	40	AHPC Pharmacy Outlet	330m <sup>2</sup>
16	Breadtop Express	123m <sup>2</sup>	40A	Lilac Express	65m <sup>2</sup>
17	Mrs Fields	58m <sup>2</sup>	42	Sonder Men's Grooming	66m <sup>2</sup>
18	Fancylife Cosmetics	49m <sup>2</sup>	43	Tom's Project	57m <sup>2</sup>
23A	Master Yang	70m <sup>2</sup>	44	Tea Journal	87m <sup>2</sup>
24	Bakerie Atelier	35m <sup>2</sup>	45	QC Dental	78m <sup>2</sup>
25A	The Steam Engine	27m <sup>2</sup>	46	Japan Home Centre	142m <sup>2</sup>
26A	HBCTx PAFU	21m <sup>2</sup>	49A	Fancy Lash	143m <sup>2</sup>
26B	Krispy Kreme	91m <sup>2</sup>	K1-K2	N33 Hair Studio	55m <sup>2</sup>
27	Sea Nails and Beauty	87m <sup>2</sup>	K3	Johnnies Food Haus	22m <sup>2</sup>
28	Twinkle Glory	71m <sup>2</sup>	K4	Celsius Dessert Bar	22m <sup>2</sup>
29A	Lilac's Hair Studio	65m <sup>2</sup>	K5	Saigon Rolls	33m <sup>2</sup>
30	Mochi Donuts	34m <sup>2</sup>	K6	Granny Wolf Street Food	19m <sup>2</sup>
31A	Newsagency	35m <sup>2</sup>	K7	Liu's Kitchen	34m <sup>2</sup>
31B	About ACC	30m <sup>2</sup>	K8-K9	The Lamb Lab	53m <sup>2</sup>
32	Koomi	40m <sup>2</sup>			
33	Freechoice Chatswood	40m <sup>2</sup>			

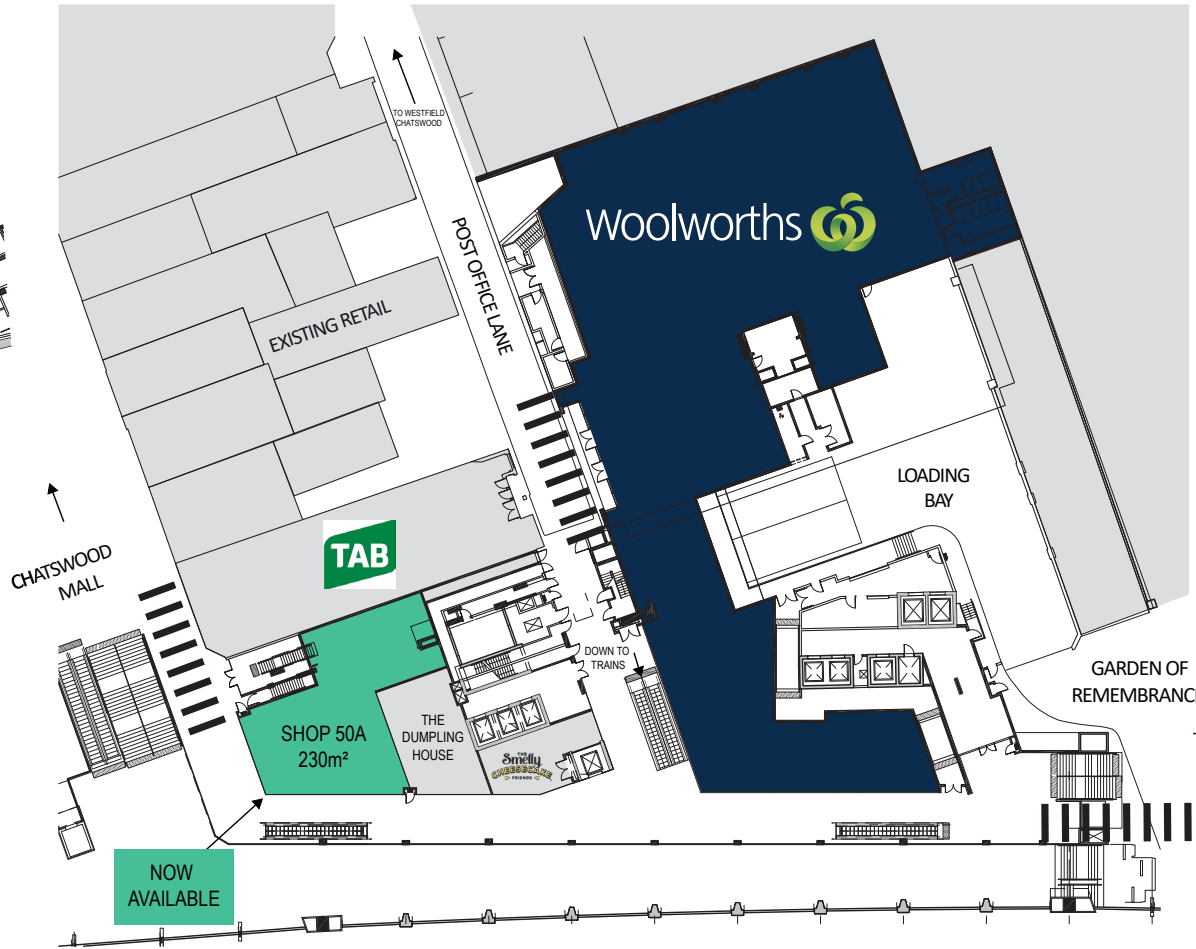
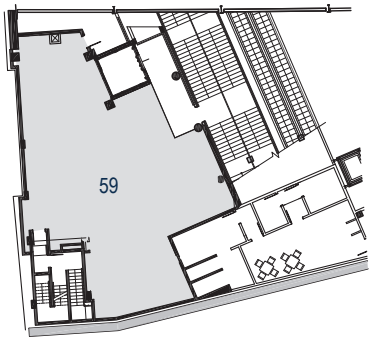
## Key

- Major
- Specialty
- Leasing Opportunity
- Main Entry

All areas (m<sup>2</sup>) quoted are approximate.

# CENTRE PLAN

## GROUND LEVEL



### Tenancies

50A	National Australia Bank (NAB)	230m <sup>2</sup>
53A	The Dumpling House	89m <sup>2</sup>
54	The Smelly Cheesecake	56m <sup>2</sup>
59	KODI Hair & Fashion	220m <sup>2</sup>

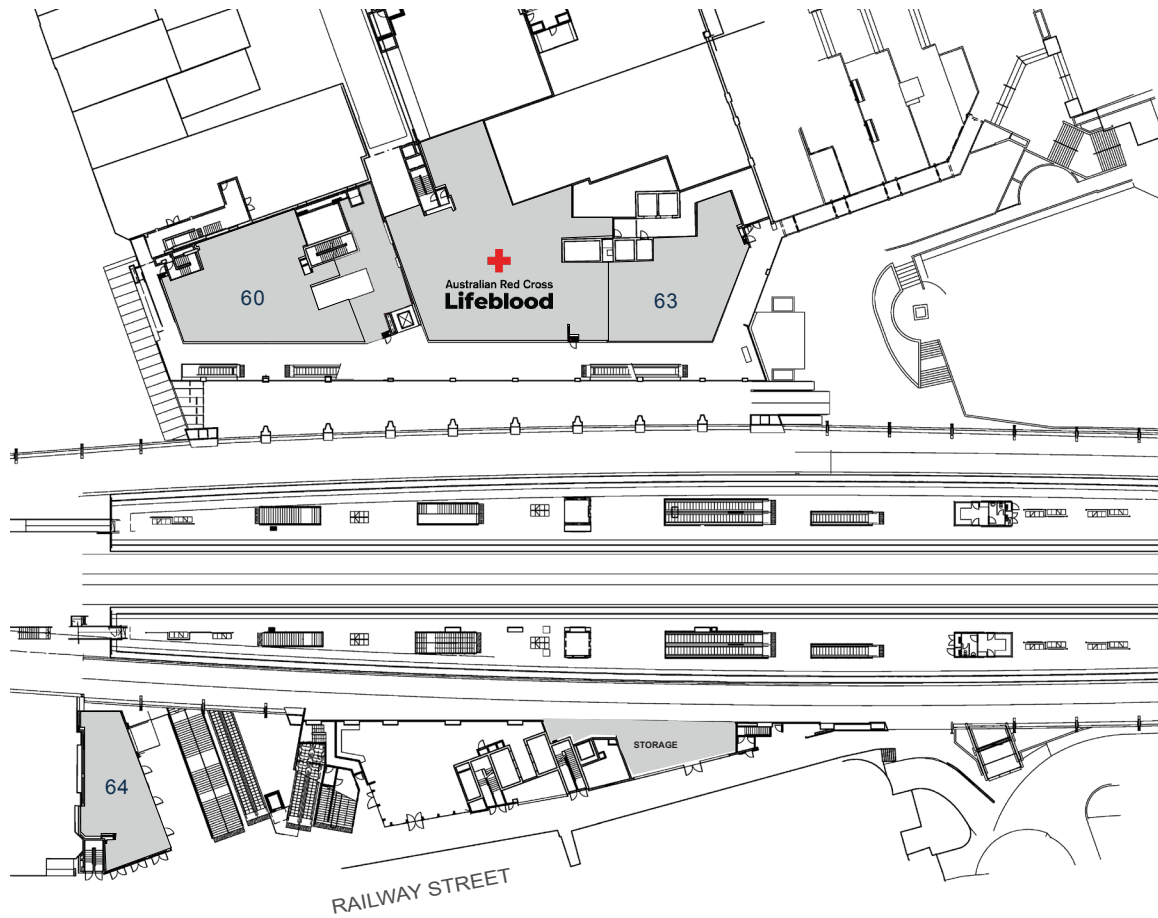
### Key

- Major
- Specialty
- Leasing Opportunity
- Main Entry

All areas (m<sup>2</sup>) quoted are approximate.

# CENTRE PLAN

## LEVEL ONE



### Tenancies

60	Be Me Day Spa	288m <sup>2</sup>
63	Think Academy	188m <sup>2</sup>
64	Zhang Liang Malatang	155m <sup>2</sup>

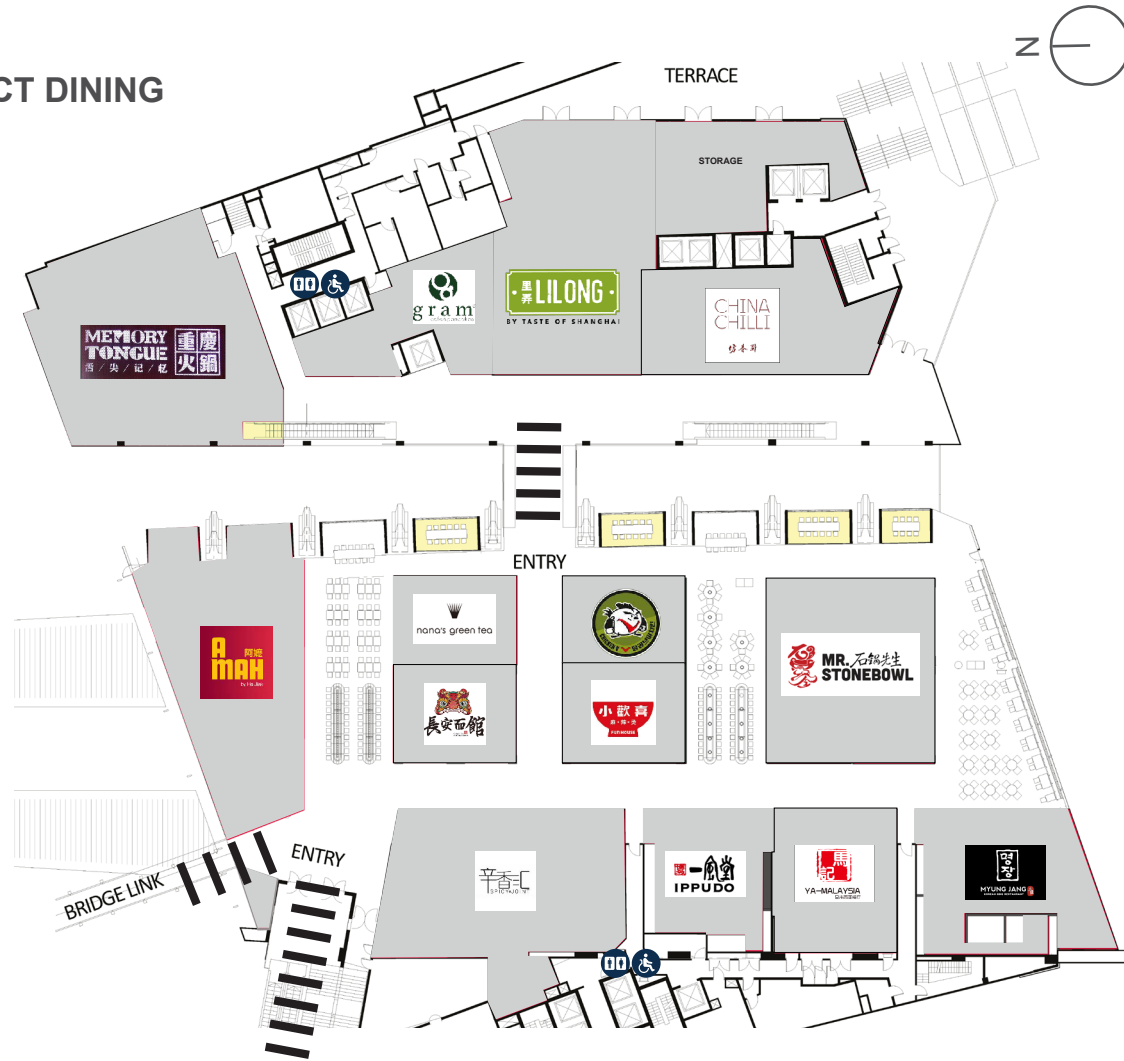
### Key

<span style="display: inline-block; width: 10px; height: 10px; background-color: black; margin-right: 5px;"></span>	Major	<span style="display: inline-block; width: 10px; height: 10px; border-bottom: 1px solid black; margin-right: 5px;"></span>	Main Entry
<span style="display: inline-block; width: 10px; height: 10px; background-color: lightgray; margin-right: 5px;"></span>	Specialty		
<span style="display: inline-block; width: 10px; height: 10px; background-color: green; margin-right: 5px;"></span>	Leasing Opportunity		

All areas (m<sup>2</sup>) quoted are approximate.

# CENTRE PLAN

## DISTRICT DINING



## Tenancies

P1	Nana's Green Tea	41m <sup>2</sup>
P2	Da Tang Noodles	94m <sup>2</sup>
P4	Chicken V	82m <sup>2</sup>
P5	Malatang Fun House	94m <sup>2</sup>
P6-B	Mr Stonebowl	243m <sup>2</sup>
66	Memory Tongue	342m <sup>2</sup>
67	Gram Cafe & Pancakes	160m <sup>2</sup>
68	Lilong Taste of Shanghai	337m <sup>2</sup>
69	China Chilli	176m <sup>2</sup>
75A-B	Spicy Joint	288m <sup>2</sup>
77A	Ippudo	131m <sup>2</sup>
78A	Yamalaysia	136m <sup>2</sup>
79A	Myung Jang Korean BBQ	195m <sup>2</sup>
K1-2	Amah by Ho Jiak	104m <sup>2</sup>

## Key

<span style="display: inline-block; width: 10px; height: 10px; background-color: #003366; border: 1px solid black;"></span>	Major	<span style="display: inline-block; width: 10px; height: 10px; border-bottom: 1px solid black; margin-right: 5px;"></span>	Main Entry
<span style="display: inline-block; width: 10px; height: 10px; background-color: #cccccc; border: 1px solid black;"></span>	Specialty		
<span style="display: inline-block; width: 10px; height: 10px; background-color: #00ff00; border: 1px solid black;"></span>	Leasing Opportunity		

All areas (m<sup>2</sup>) quoted are approximate.

DISCLAIMER: The information set out in this document has been prepared using information derived from a variety of external sources at time of print and is intended as a guide only and may be subject to change. Neither Rook Sheu Pty Ltd t/a Rook Partners, RHC Retail Pty Ltd t/a Rook Partners Asset Management nor the landowner warrant the accuracy of any of the information and they do not accept legal liability or responsibility for any injury, loss or damage incurred by the use of, reliance on, or interpretation of the information contained herein. Rook Sheu Pty Ltd t/a Rook Partners, RHC Retail Pty Ltd t/a Rook Partners Asset Management, nor the landowner are liable for any loss arising from such unauthorised use or reliance.